



Western Region Megapolis

Consolidating Colombo's position as the only truly global city in the Indian Ocean region

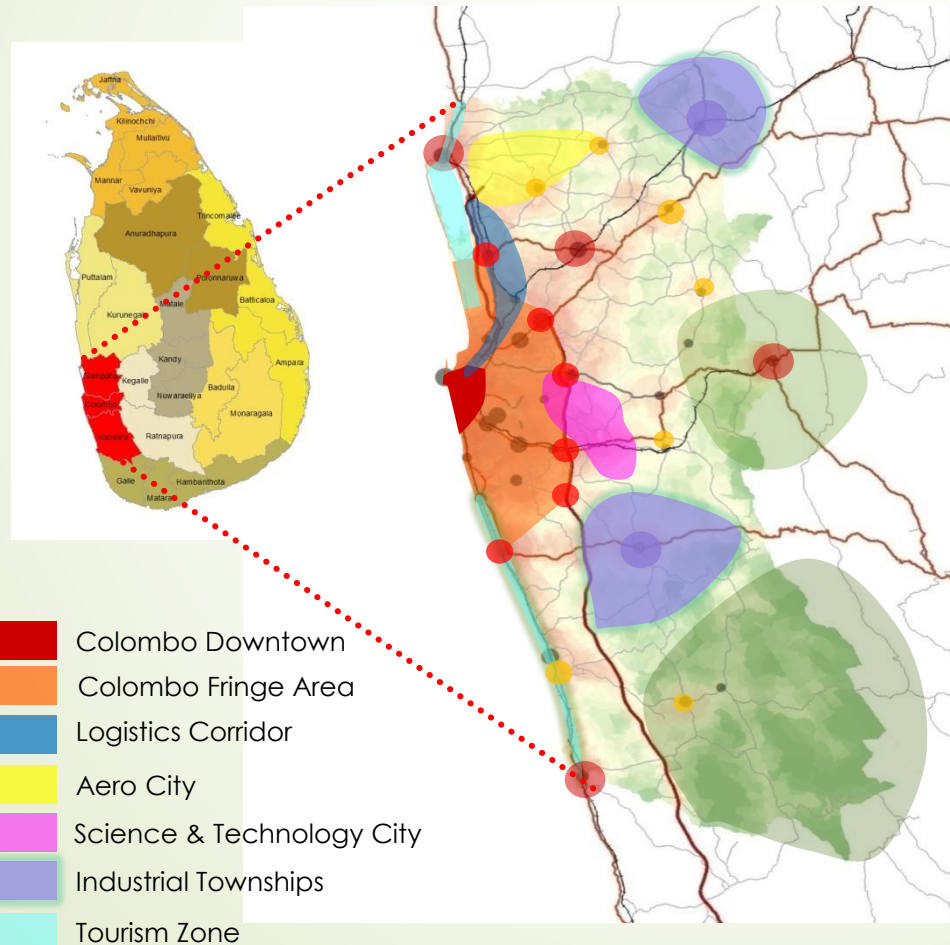
LBO/LBR Infrastructure Summit
20th September 2016

Nayana Mawilmada
Head of Investments
Western Region Megapolis Project

Western Region Megapolis

Diverse, inclusive and sustainable

A clear vision for structural transformation



5 GOALS



Economic Growth
and prosperity



Good
Governance



Well Planned
Region



Social Equity &
Harmony

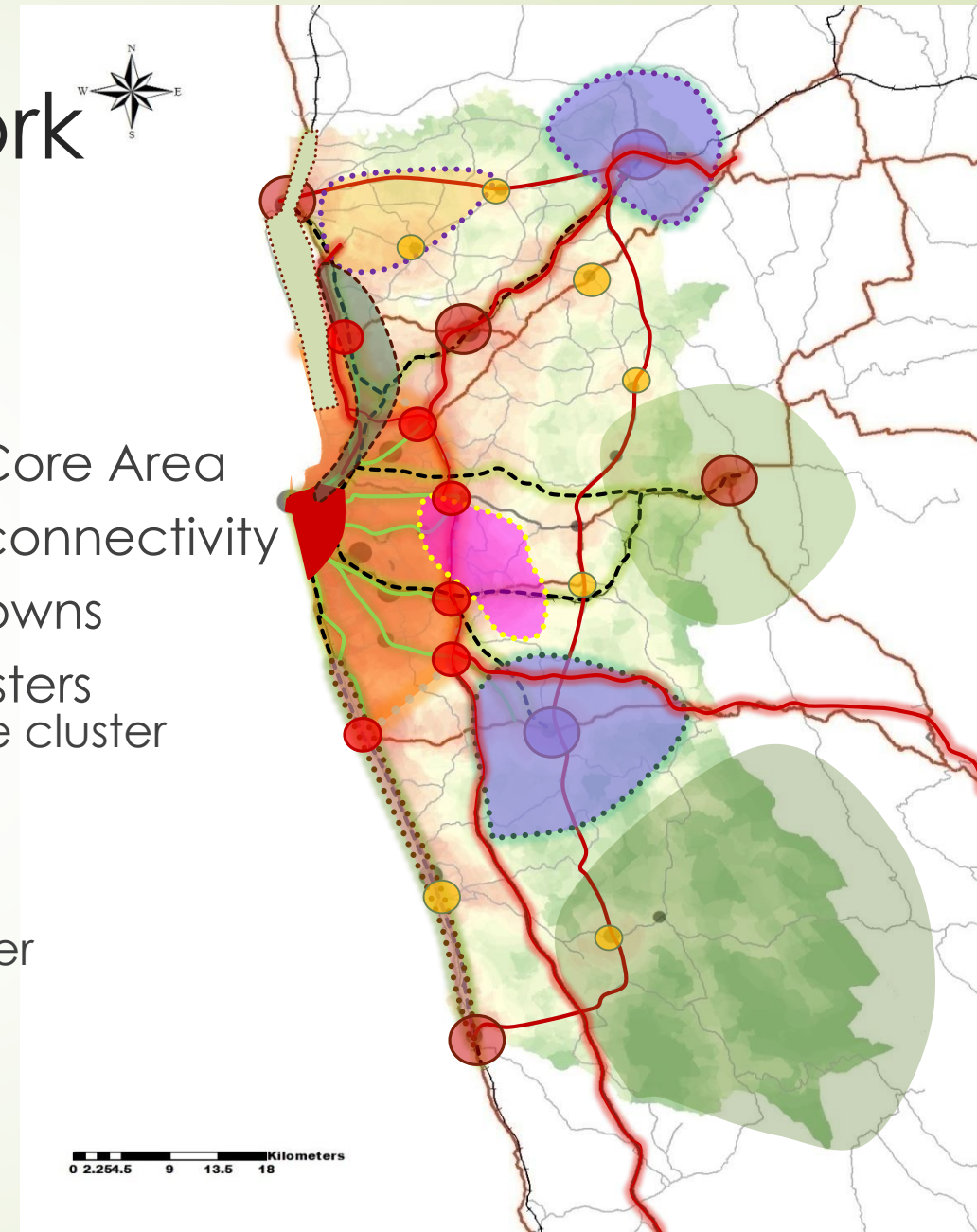


Environmental
Sustainability



Conceptual Framework

- Define an urban edge
- Density nodes on periphery of the Core Area
- Link with mass transit and improve connectivity
- Upgrade and densify key existing towns
- Develop specialized economic clusters
 - ✓ Colombo CBD – financial & service cluster
 - ✓ Industrial/manufacturing cluster
 - ✓ Airport related activity cluster
 - ✓ Science and technology cluster
 - ✓ Logistics corridor
 - ✓ Plantation related economic cluster
 - ✓ Forest related economic cluster
 - ✓ Tourism cluster





Transportation Development

VISION

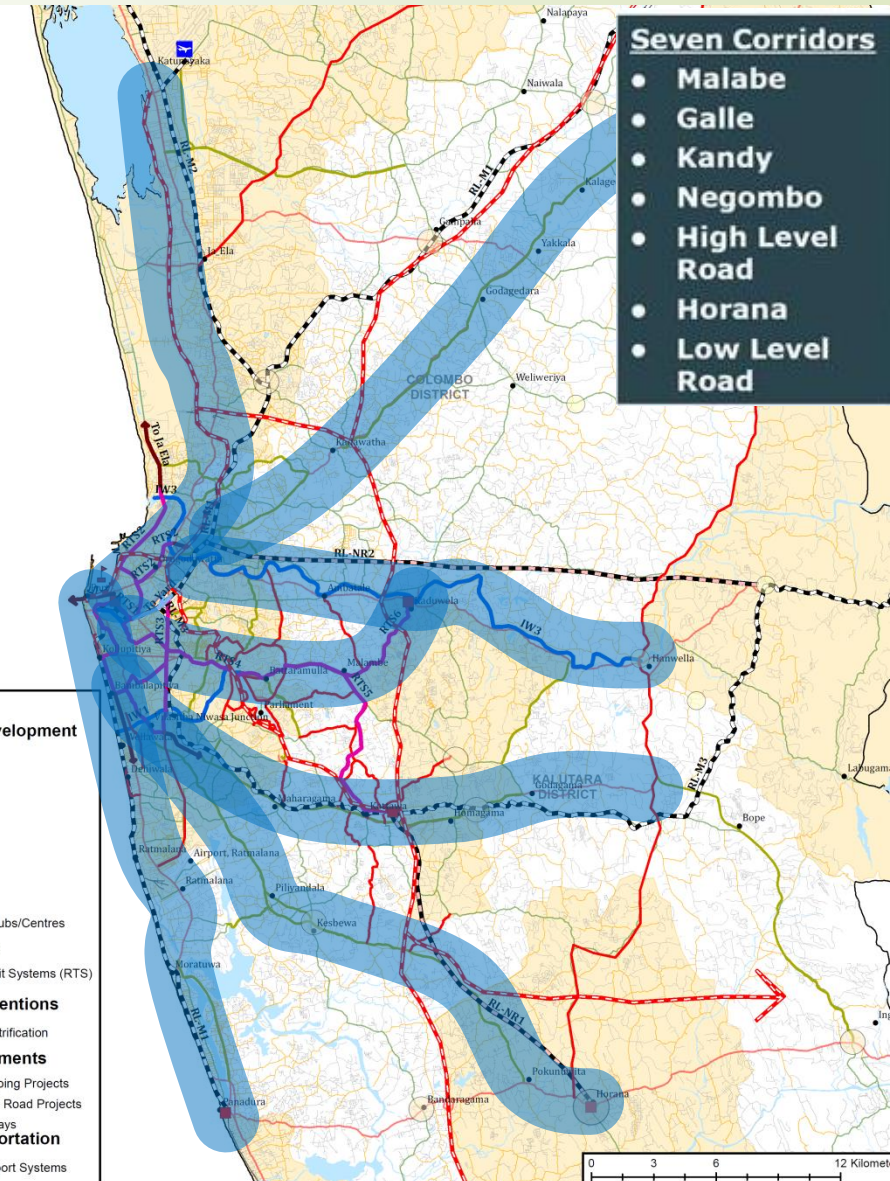
Enable a modal shift from private to public transport

Strategic Approach

- System-wide public transport improvement
- Road & rail infrastructure development
- RTS for core built-up area
- Transport Demand Management (TDM)
- Efficiency improvements
- Institutional development/coordination
- Environmental sustainability

Proposed Interventions in WR

- Modernized Bus
- Electrified Rail
- Modern RTS
- Inland water





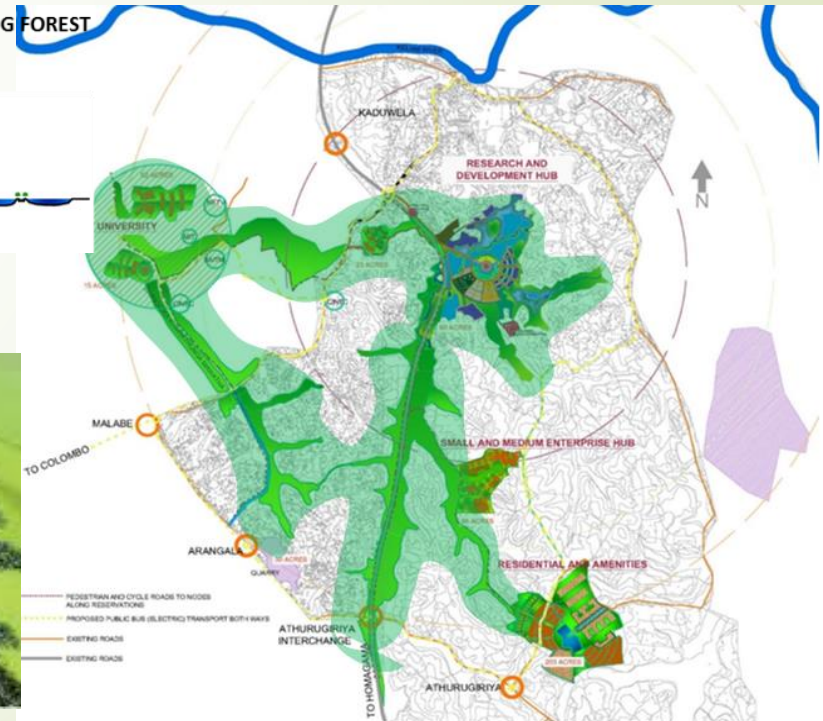
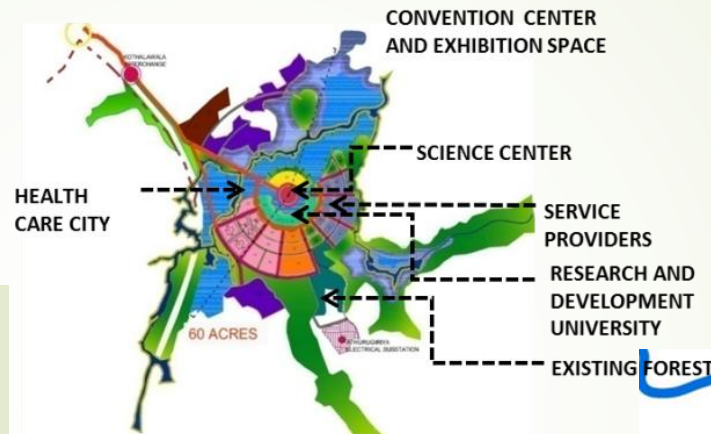
Science & Technology Cluster - Malabe

VISION

Position Sri Lanka as a hi-tech industry hub in the region

Strategic Approach

- Develop **specialized large scale R & D clusters**.
- Develop linkages between **Colombo and R&D clusters** by **Rapid Transit and Multimodal access**.
- Provide **world class high tech infrastructure** required for the industry.
- Existing **green networks** to be incorporated in to the designs in a sustainable manner.
- Develop **high end housing for creative individuals** and other associated social infrastructure development.
- Redevelop and densify **Malabe, Kaduwela and Athurugiriya** town centers to cater future demand.





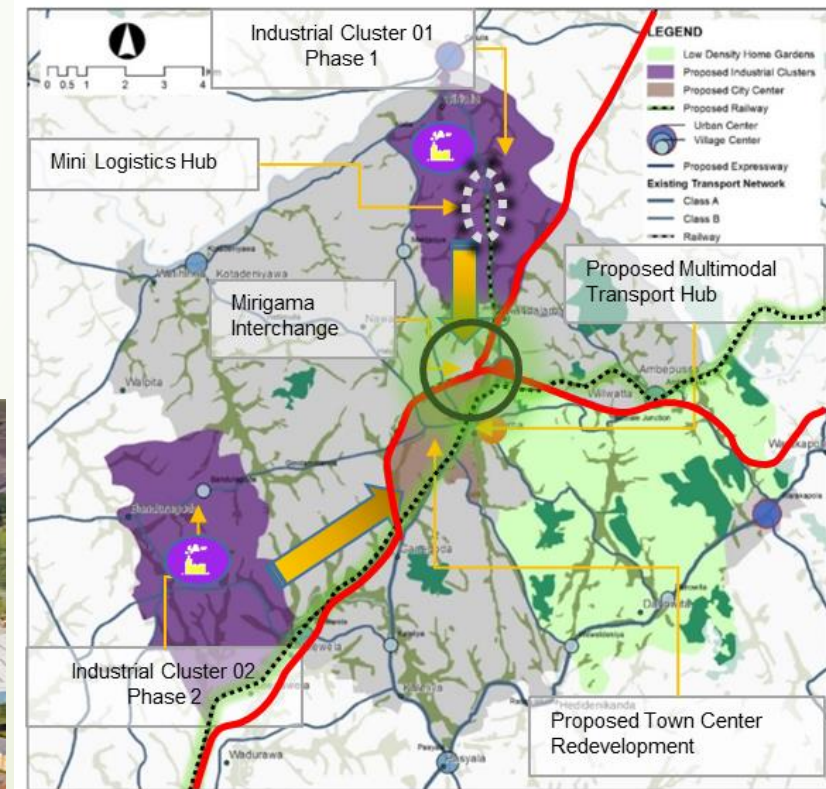
Mirigama Industrial Township

VISION

*Integrated, smart
& self contained
industrial city*

Strategic Approach

- Develop **two specialized large scale industrial clusters**.
- Develop high quality infrastructure to attract industries.
- A dedicated mini logistics hub.
- Develop a multimodal transport hub at the City Center.
- Expand Mirigama as a well planned modern industrial township.
- Conserve and link existing forest and wetland areas as green buffers around industrial developments





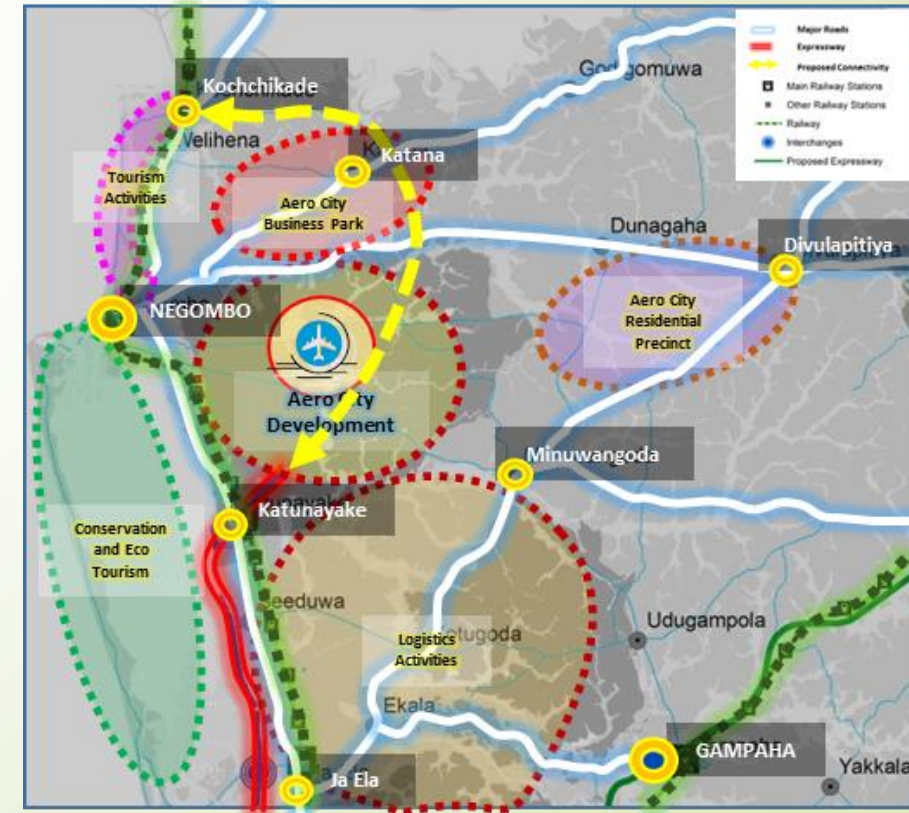
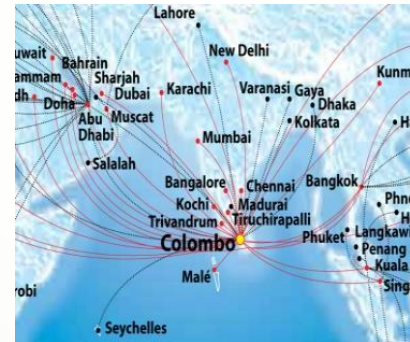
Katunayake Aero City

VISION

To be the premier aviation hub in the Indian Ocean region

Strategic Approach

- Upgrade and **expand capacity of BIA** (New Terminal/ Runaway)
- Develop an **Aero City Business Park** adjacent to the Airport. Provide areas for transit hotels, convention centers, expo centers, big box retail, and aviation-related training and business activities.
- Development of **Aero City Residential Township** at Divulapitiya
- Link with existing tourism and cultural amenities/ecosystem at Negombo





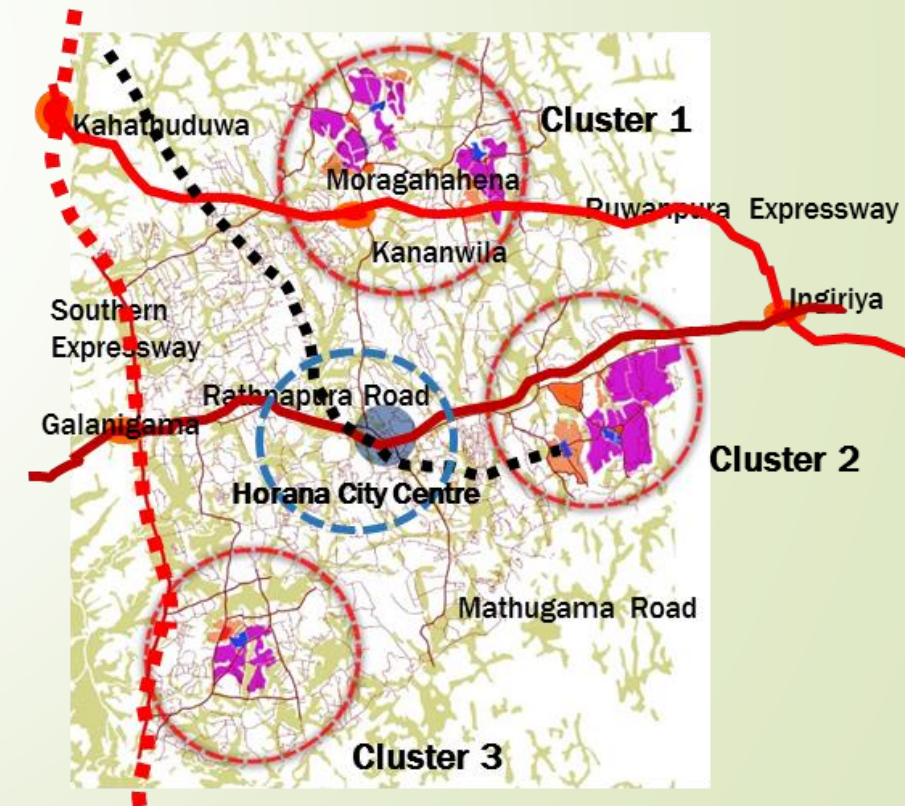
Horana Industrial Township

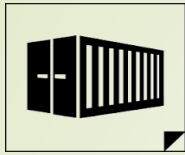
VISION

*Integrated, smart
& self contained
industrial city*

Strategic Approach

- Develop Three specialized large scale industrial clusters. (Moragahahena/Millewa, Poruwadanda & Milleniya)
- Facilitate concentration of some of the SMEs scattered across the region
- Develop Mini Logistics facilities at each cluster with access from either expressway or railway network.
- Developments to include new residential development including affordable /worker housing
- Use existing wetlands, Rubber and forest areas as green buffers around the industrial developments. Preserve environmentally sensitive areas through regulation.
- Redevelop the existing Horana town center to cater to future demand.





Logistics Corridor

VISION

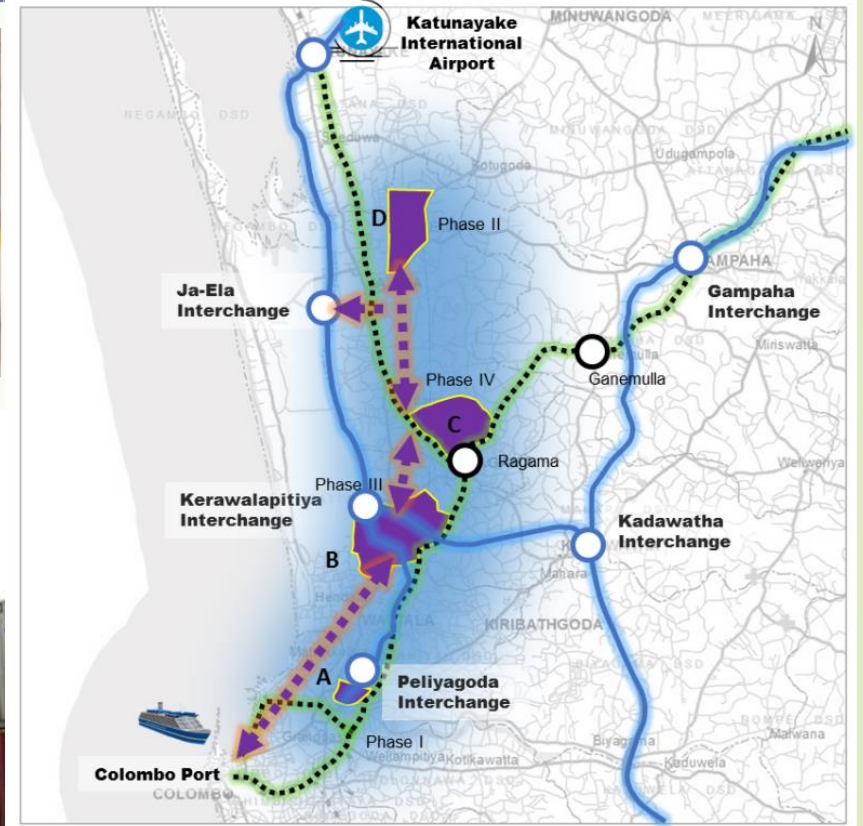
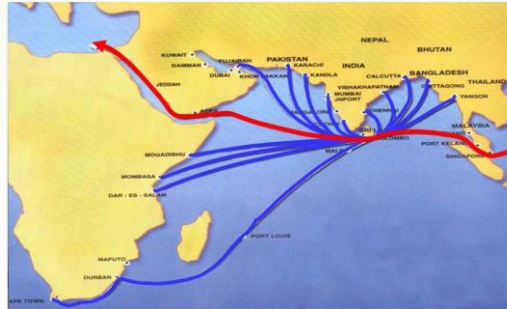
Premier transport and logistics hub in South Asia.

Strategic Approach

- Systematically consolidate and link logistics activities to minimize congestion and maximize efficiency.
- Promote rail and expressway network for freight handling.
- Develop specific clusters to accommodate transshipment facilities, storage, collection and local level distribution of cargo.

Key elements

- Freight Village/ ICD
- Dedicated road/ rail link for freight handling.
- Consolidation of cargo handling activities to a clusters with multimodal access.
- Develop and demarcate areas for ancillary facilities and residential development





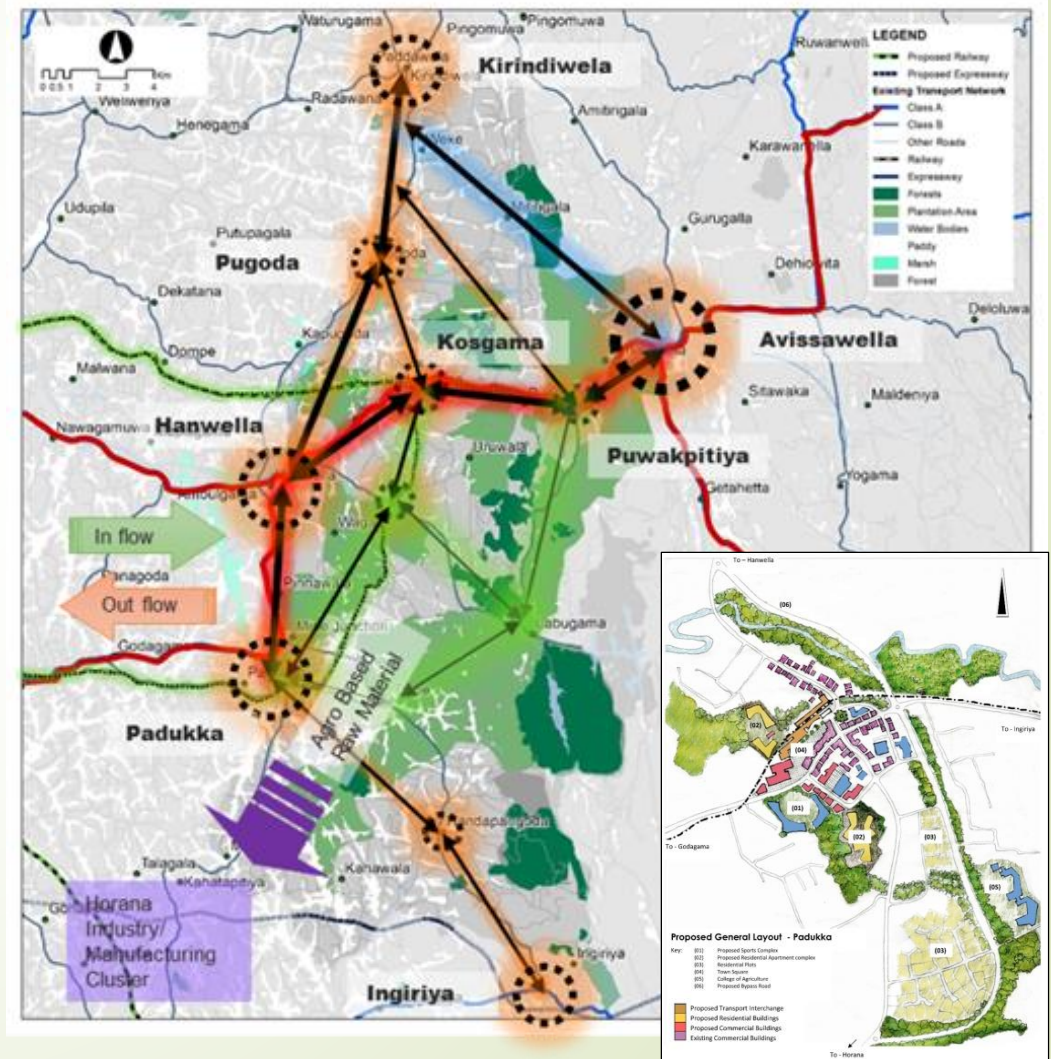
Avissawella Plantation City

VISION

A network of small townships developed while preserving the existing greenery.

Strategic Approach

- Preserve the existing green lungs of the Western Province through a planning intervention.
- Limit development to confined areas.
- Discourage development along arterial corridors and further subdivision of plantation lands through regulations.
- Enable plantation related economic activity





Forest City

VISION

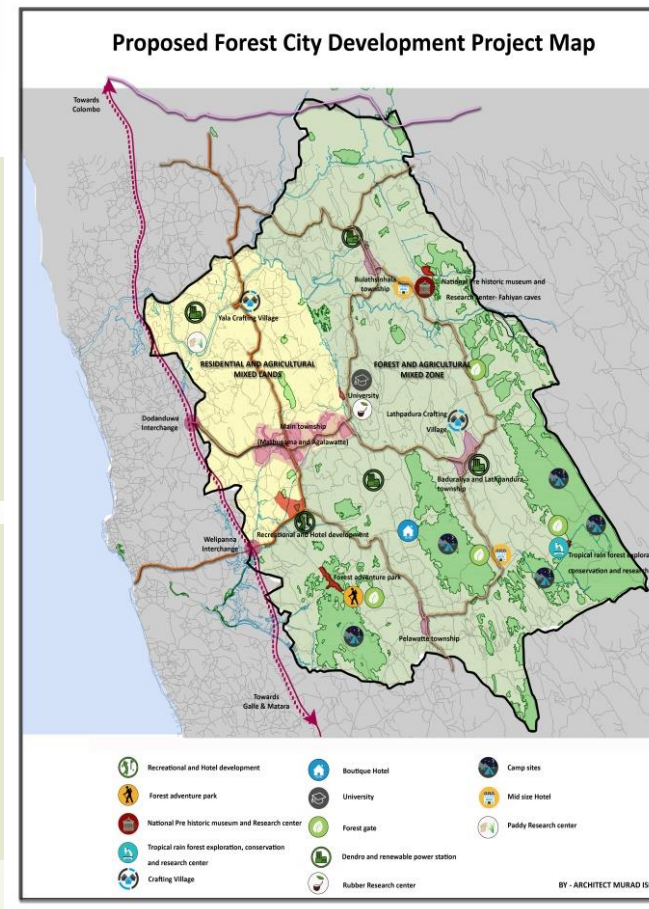
Niche residential and tourism enclaves dispersed in well protected agriculture and forest areas

Strategic Approach

- Improve the livelihoods and protect the environment at the same time.
- Tourism, including eco and agro tourism, to be key economic driver.
- Conservation and reforestation

Key Elements

- Reforestation and preservations
- Promote traditional industries
- Forest / Plantation / History based R & D
- Tourism & Adventure

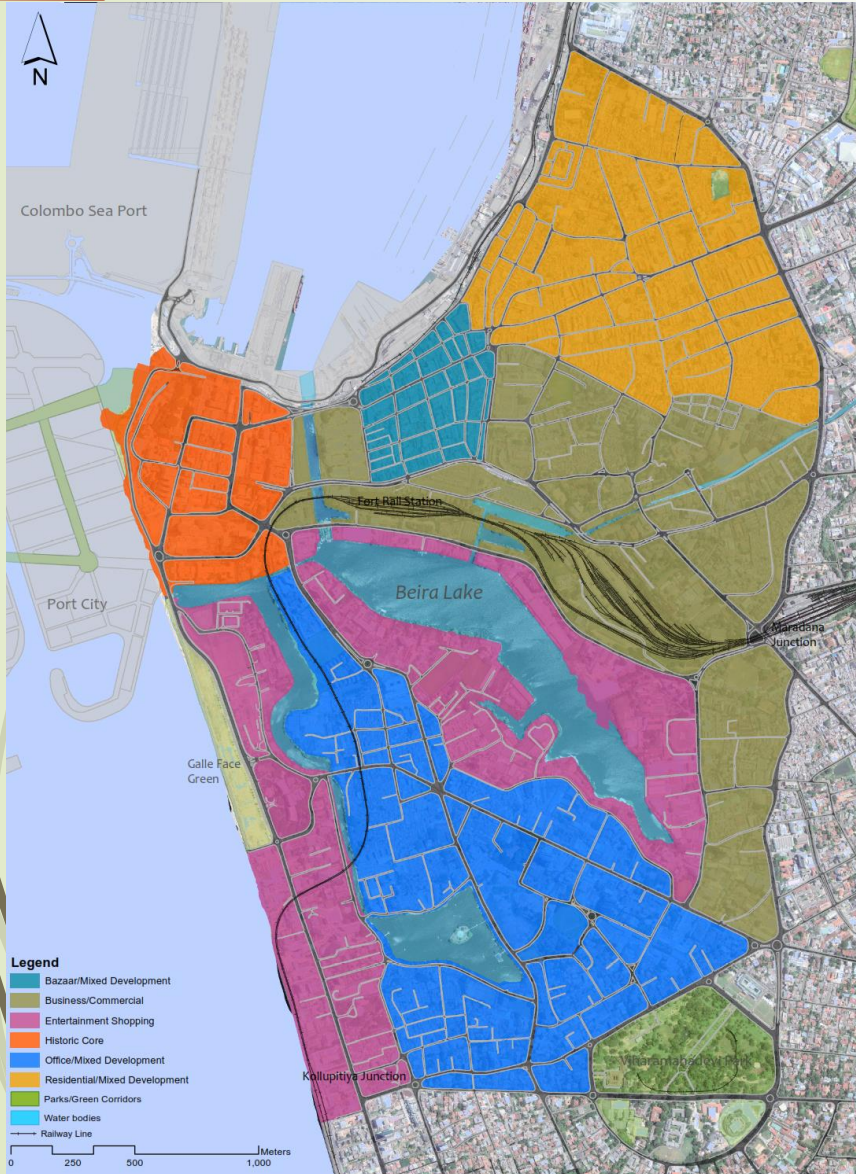


Heycock Forest Reserve (382 ha)

- 276 plant species - 135 endemic and 51 Threatened species
- 393 animals species - 123 endemic and 58 threatened species



Reshaping Colombo Downtown



- Redefining the Identity for Colombo
- Preserving & celebrating the urban heritage
- A network of public spaces for everyone
- Unlocking value of public assets
- Mainstreaming mass transit

Exceptional connectivity

A convergence of public transport

- Multimodal connectivity
- Intra and inter-city bus
- LRT
- Electrified rail
- Water transport
- Cruise ships



A network of open spaces

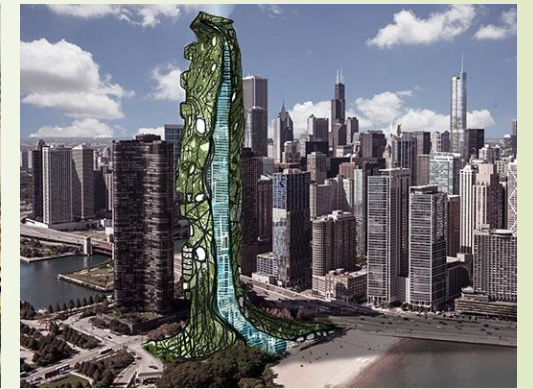
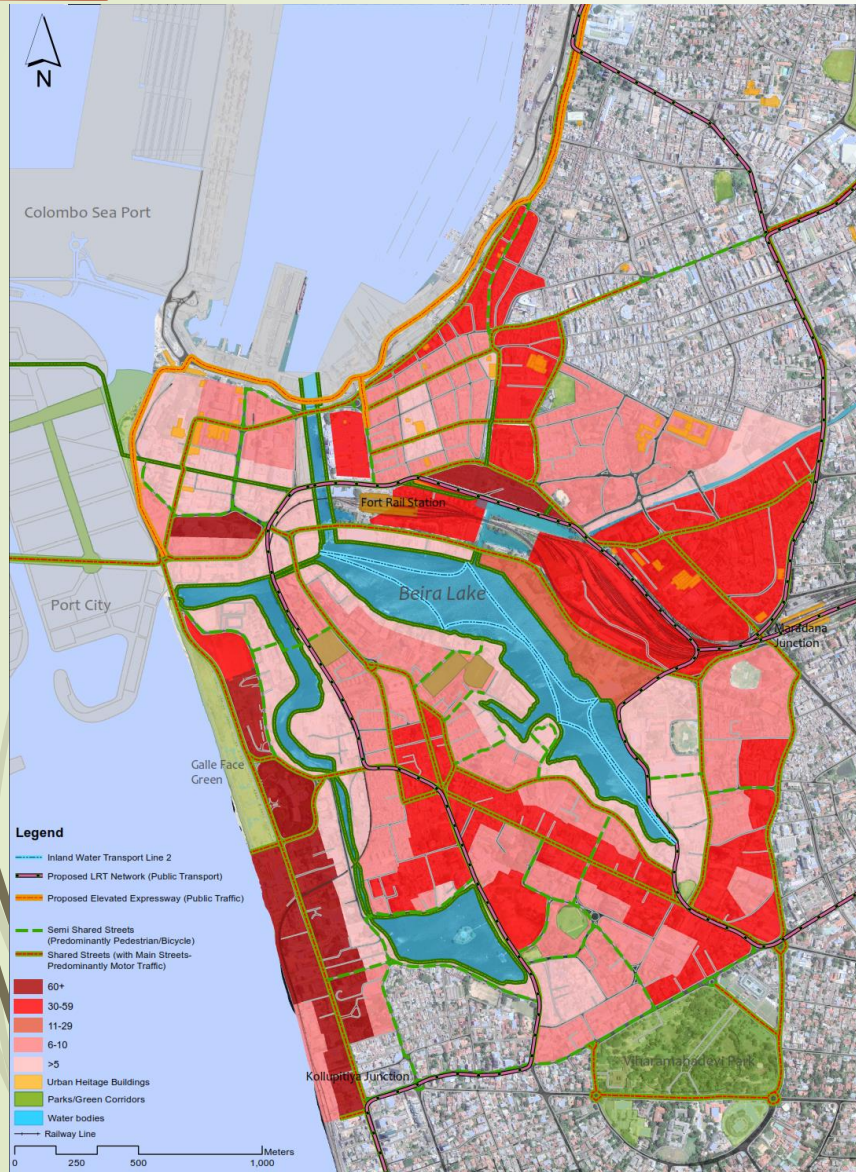
A pedestrian-friendly city accessible to all

- A system of public spaces throughout the city
- Capitalize on the waterfront
- Ensure walkability

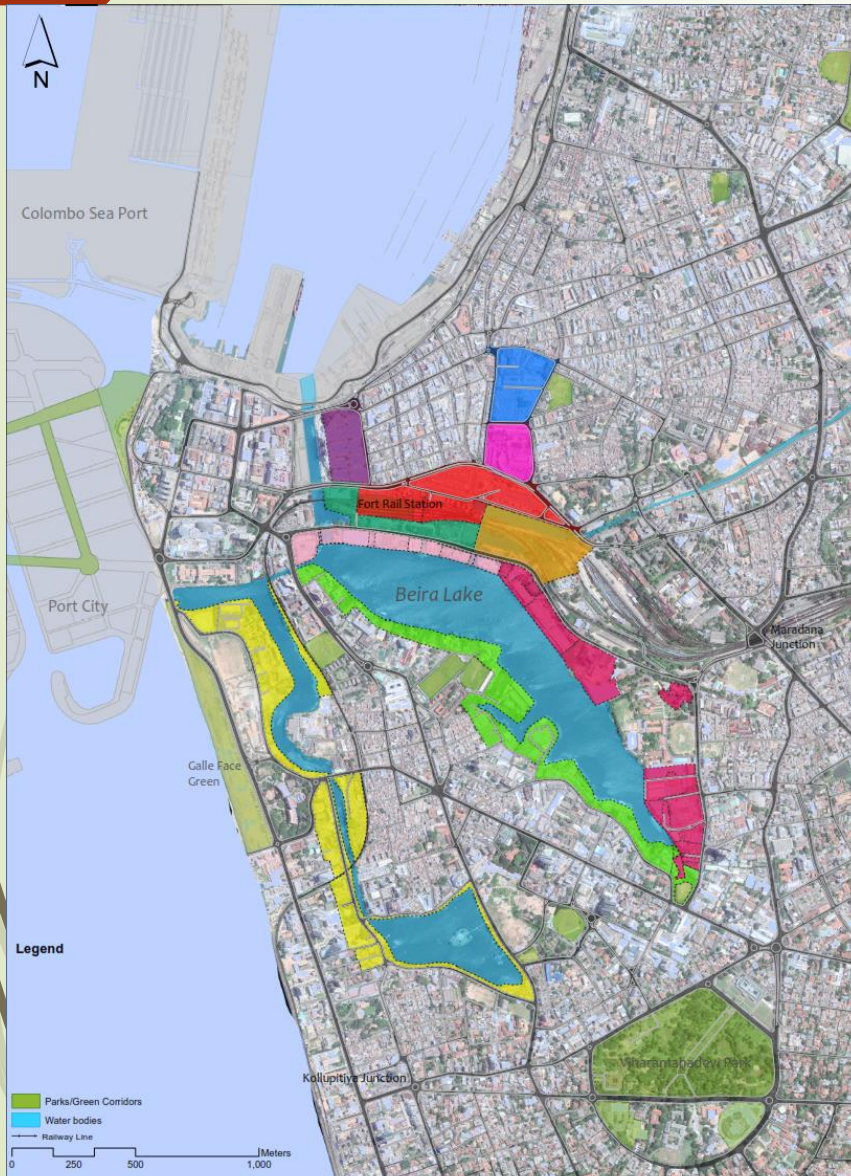


Density that cradles the water

- Conserve the scale of Fort historic district and Pettah
- Increase density along key corridors
- Step down to the lake



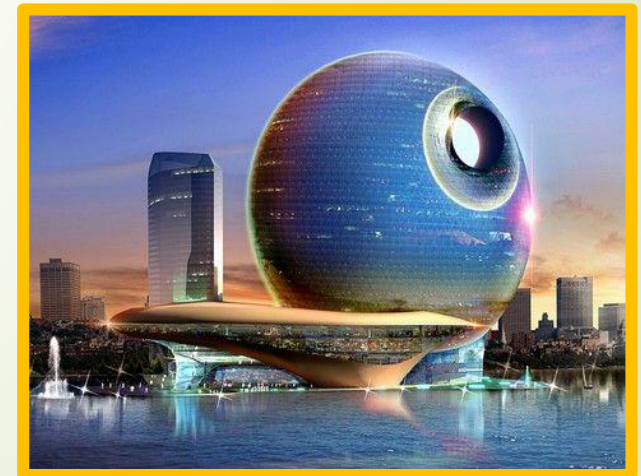
Concentration of state assets



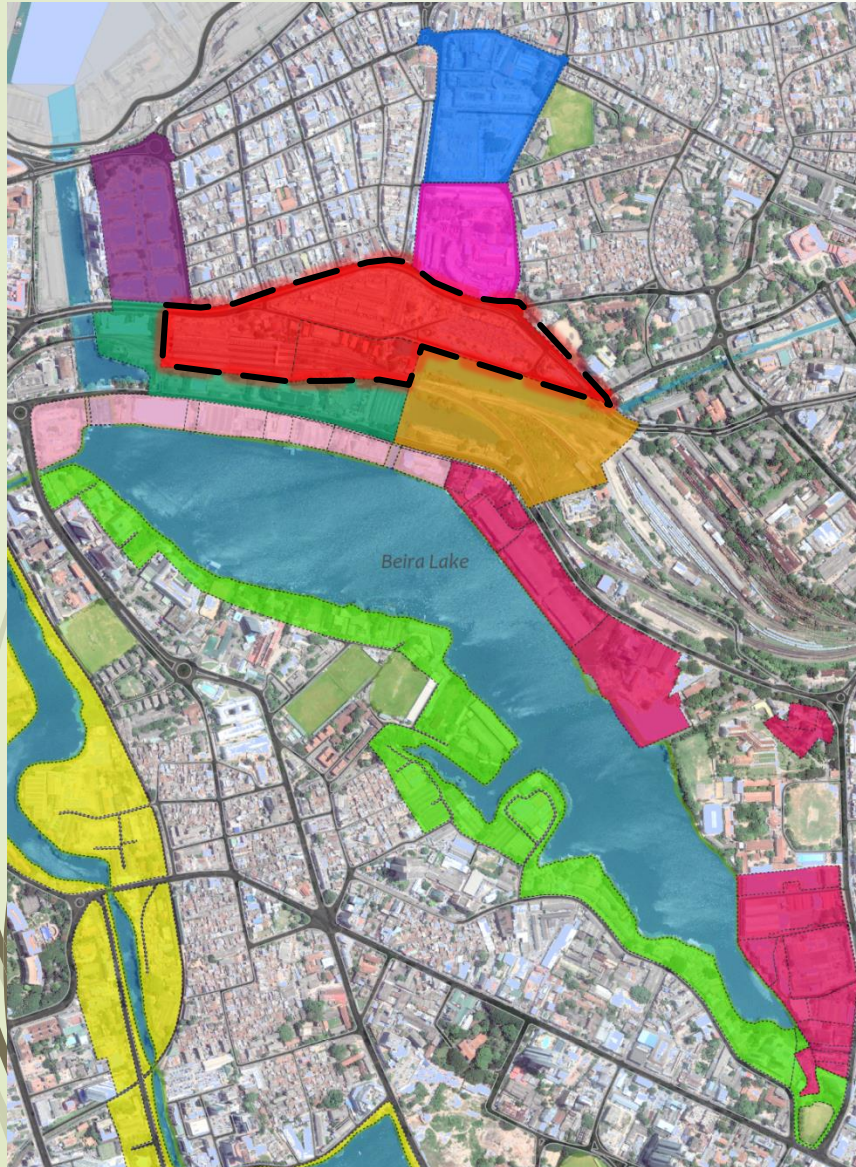
<div></div>	Colombo Transport Interchange	34 Acres
<div></div>	Chalmers Granaries:	9.6 Acres
<div></div>	Bodhiraja Mawatha (1 & 2)	27 Acres
<div></div>	Beira Water Front North (1,2,3)	62 Acres
<div></div>	Beira Water Front South	41 Acres
<div></div>	Beira Water West	53 Acres

TOTAL : 226.6 Acres

Opportunities for landmark architecture



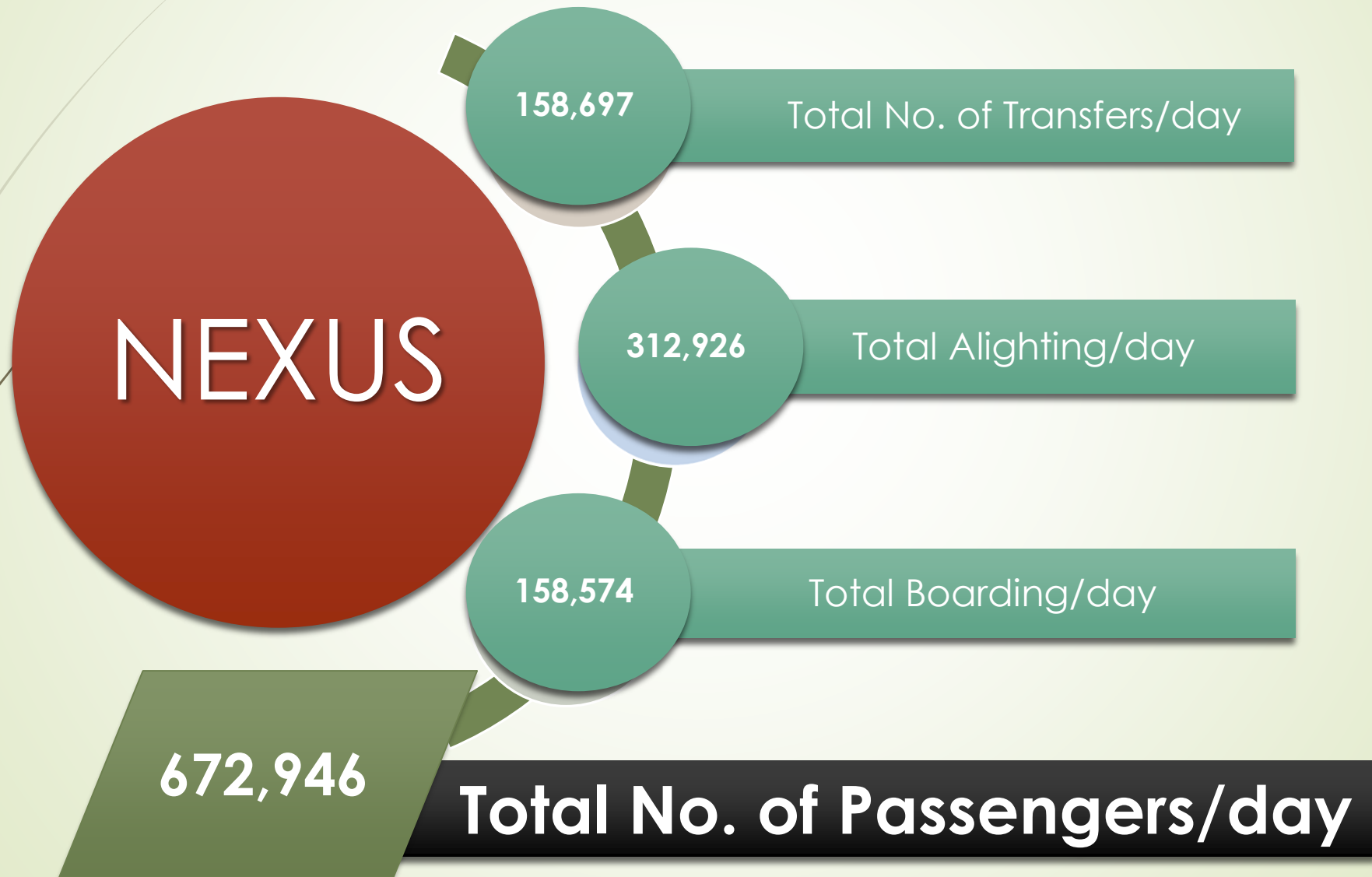
Colombo Nexus: the multimodal hub



- Total Extent of Colombo Transport Interchange : 34 Acres
- Public uses:
 - Bus Terminal
 - RTS Station
 - Taxi bays
 - Three-wheel bays
 - Parking
- Commercial uses:
 - Retail
 - Commercial Office



The most connected point in the city



The pivot of the Megapolis transport system

Railway Electrification & Modernization

- Station Modernization
- Track Improvements
- Signal updates & Synchronization



Rapid Transit

- Total Length of 75km
- Elevated 63km, At-grade 12km
- Approx. 40 stations
- Max. of 30,000 PPHPD



Bus Modernization

- Rescheduling Buses
- Revision of Bus routes
- Introducing low floor A/C buses
- Incorporation of smart IT systems including GPS



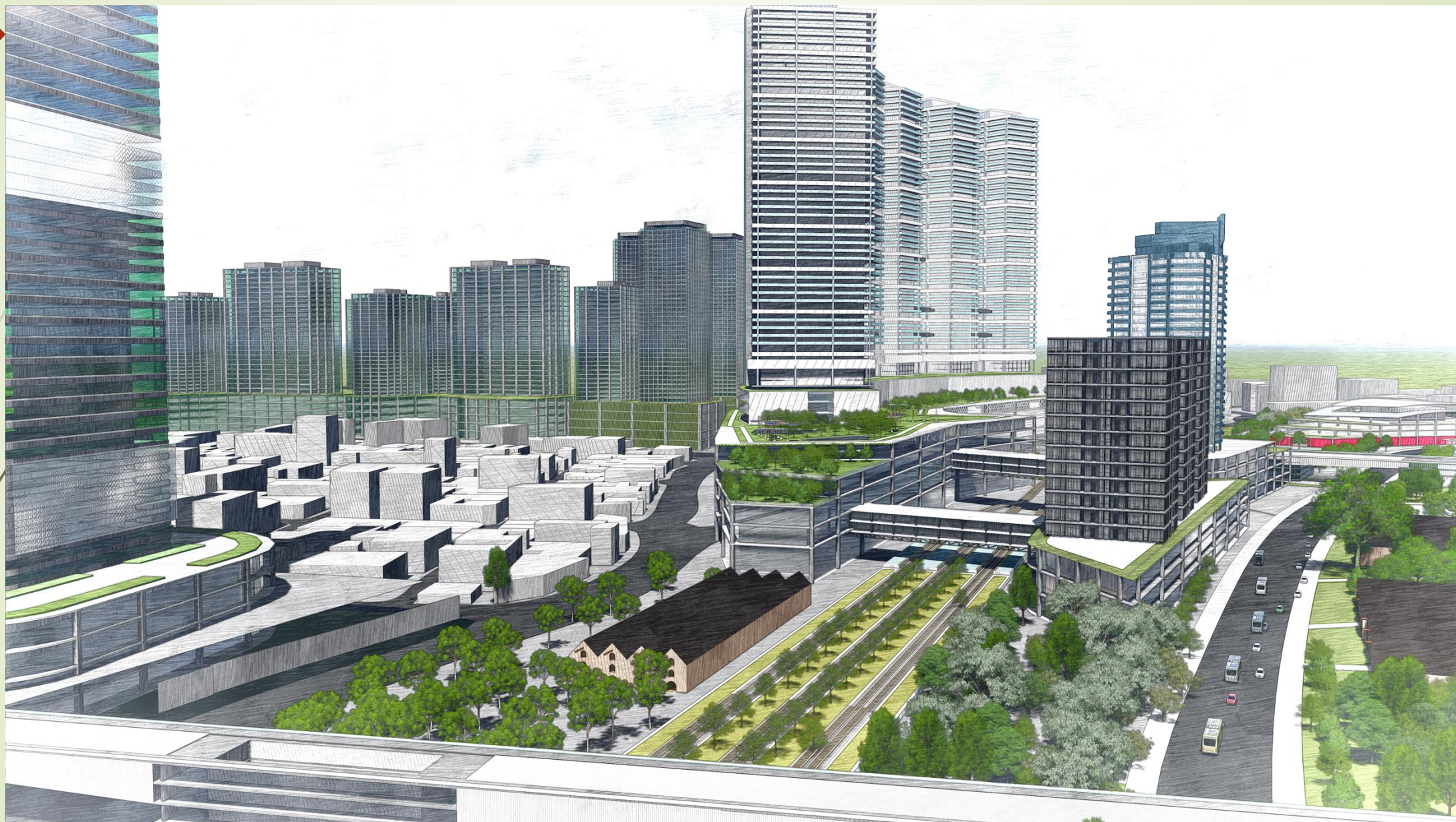
Water Transport

- Modern A/C boats
- Modern jetties
- Commuter friendly facilities
- East-West connectivity

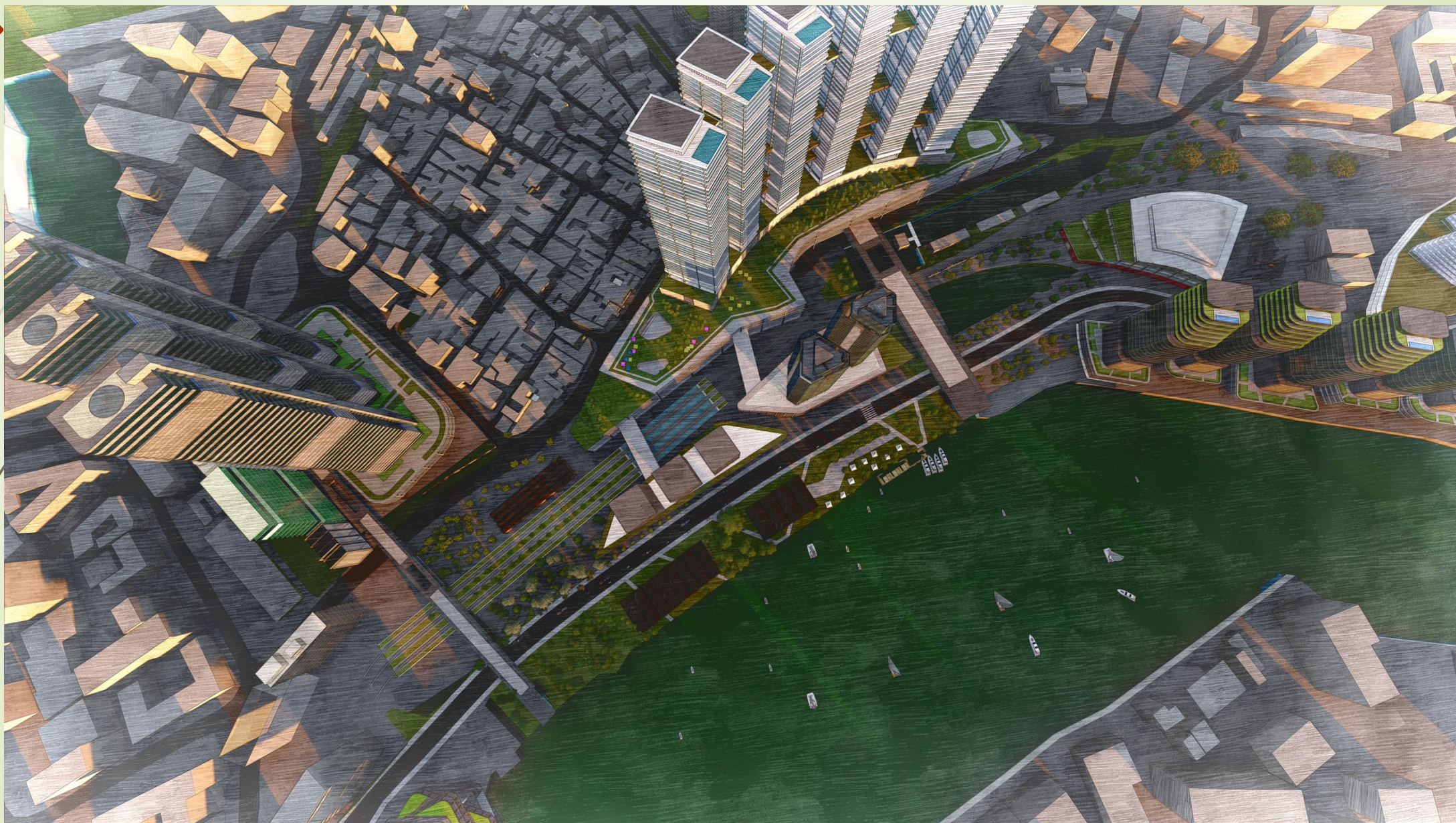


Colombo
NEXUS


















What are we trying to achieve?

- 
- Improved quality of life—a nicer, less congested, and people friendly city
 - A vibrant city region with improved access to housing for all income groups
 - High quality urban and social services
 - A cosmopolitan and well integrated society
 - Efficient transportation—a “compacting” of the city
 - Higher value jobs in a robust economy
 - A network of cities that is environmentally sustainable, globally competitive, yet uniquely Sri Lankan in identity.

Enabling investments are underway

Light Metro	Phase 1: Green Line (RTS1) and Purple Line (RTS4)	SLR 181,869mn (US \$ 1,250 mn)	Funded. Detailed feasibility in progress
Railway Electrification	Phase 1: Panadura to Veyangoda/Polgahawela	SLR 159,500 mn (US \$ 1,100 mn)	Funded. Detailed feasibility in progress
Inland Water Transport	W'watta to B'mulla, Fort to Union Place, Mattakkuliya to Hanwella.	SLR 18,125 mn (US \$ 125.1 mn)	Tender documents under preparation
Beira Waterfront Development	Waterfront walkway and linear parks, Phase 1.	SLR 2,175 mn (US \$ 15 mn)	Funded. Under construction.
Land Consolidation	Manning market relocation		On going
Port Access Highway	5.6 km, access to Colombo Port, Fort, and Financial City	SLR 36,250 mn US\$ 250m	Funded. Detailed design in progress.
Middle income housing programme	6 sites awarded, more in pipeline	TBD	Ongoing. Market driven.



The path ahead is fraught with challenges

- We cannot solve all our problems. And transformation will take time.
 - No perfect answers/solutions. A constant series of judgement calls and tradeoffs.
 - Sustainability principles must be an integral part of our ethos, not just a sugar coating
 - We must resist the temptation to be reactive to short term needs, and keep ourselves focused on long-term sustainability
- 